



259 Frame Drive Sawyers Gully, NSW



Your Stunning Lifestyle Sanctuary

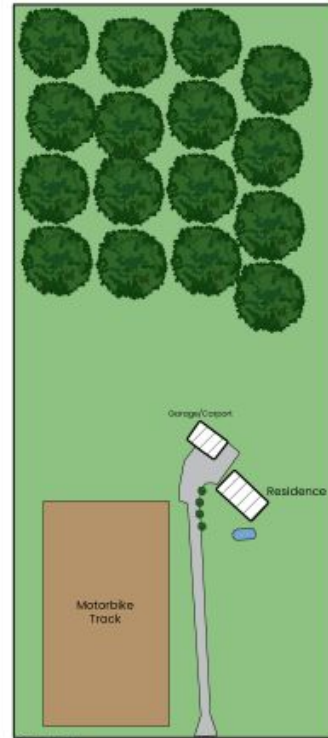
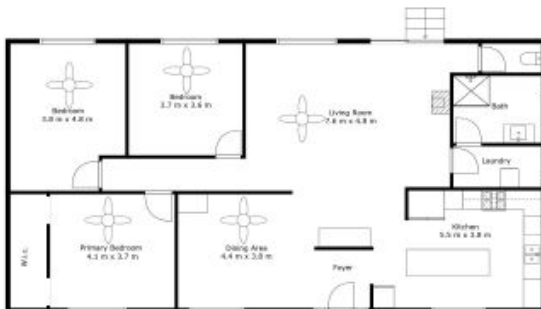
- A substantial and flawless lifestyle sanctuary on 4.05 Ha - Endless opportunities for land usage
- Immaculate gourmet kitchen with luxe double wall oven, dishwasher and generous kitchen island
- Vast open lounge and living with ceiling fan, slow combustion fireplace and ducted air throughout
- Three bedrooms with ceiling fans ? the primary with double entry walk through robe
- Sleek and as new bathroom with black tap ware and tile insert drain
- 7.5x8.8m garage with attached double carport, 4x 25,000L rain water tanks
- Use the current motorbike track or add paddocks and orchards

Council Rates: \$752.00 p/q

Debra Ford

0413 478 655

259 Frame Drive
Sawyers Gully



Site Map



The site plan and floor plan are not to scale; measurements are indicative and in metres. Bushes and trees are placed for illustration purposes. Plans should not be relied on. Interested parties should make and rely on their own enquiries. All other information provided has been collected from reliable sources but cannot be guaranteed for accuracy.

